

# ARBOR'S EDGE

AN ADDITION TO THE CITY OF SIOUX FALLS,  
MINNEHAHA COUNTY, SOUTH DAKOTA.

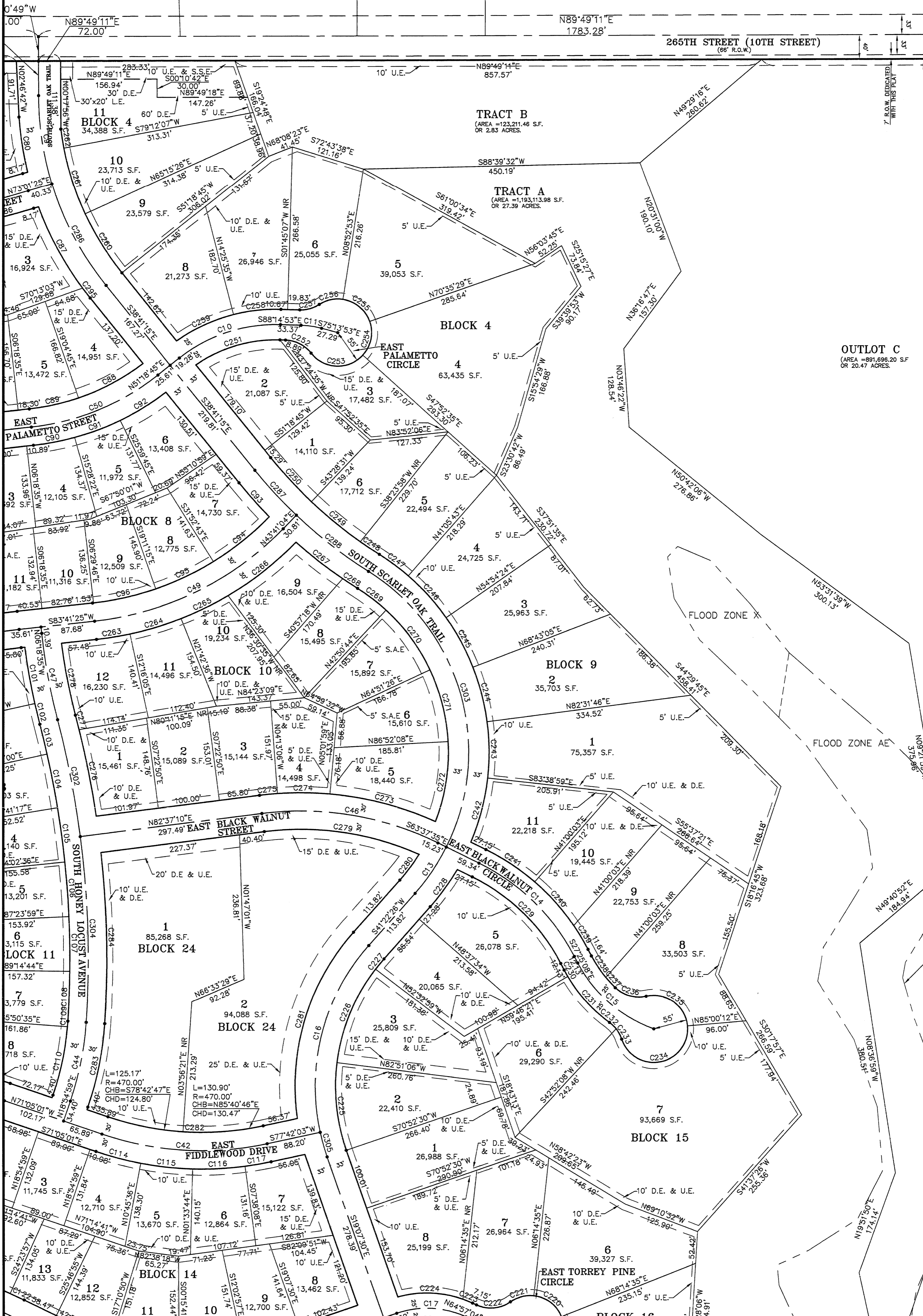


NORTH  
SCALE 1" = 100'

100 0 100 200 300 FEET

**Legend:**

- P - PLAT DISTANCE
- S - SURVEYED DISTANCE
- R - RECORDED DISTANCE
- C - CALCULATED DISTANCE
- C.T.P. - CRIMPED TOP PIPE
- O.T.P. - OPEN TOP PIPE
- S.D.H. - STAR DRILL HOLE
- CH - CHISELED "X" IN CONCRETE
- - FOUND SURVEY POINT
- Δ - SET SURVEY POINT, 5/8" X 24" REBAR WITH CAP #7289
- U.E. - UTILITY EASEMENT
- D.E. - DRAINAGE EASEMENT
- S.S.E. - SANITARY SEWER EASEMENT
- S.A.E. - SUMP ACCESS EASEMENT
- L.E. - LANDSCAPE EASEMENT TO THE ARBOR'S EDGE HOME OWNERS ASSOCIATION AND FULCRUM LAND HOLDINGS, LLC
- T.C.E. - TEMPORARY CONSTRUCTION EASEMENT TO FULCRUM LAND HOLDINGS



**EHRHART  
GRIFFIN &  
ASSOCIATES**

Project No. EGA061193 SHEET 4 OF 12  
ENGINEERING PLANNING LAND SURVEYING  
300 N. Dakota Ave., Ste. 114 • Sioux Falls, South Dakota 57104 • 605/339-7215